

Smart Emission

Data

Viewers

Standaarden

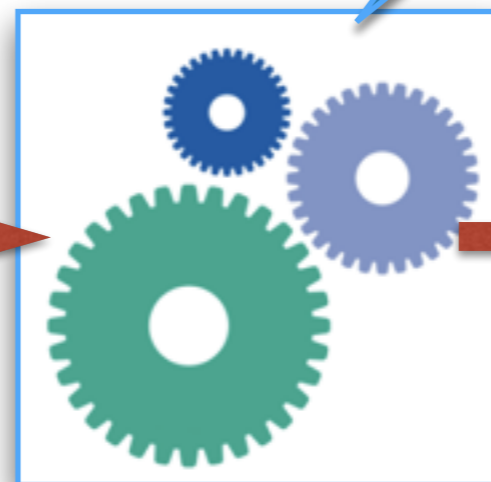
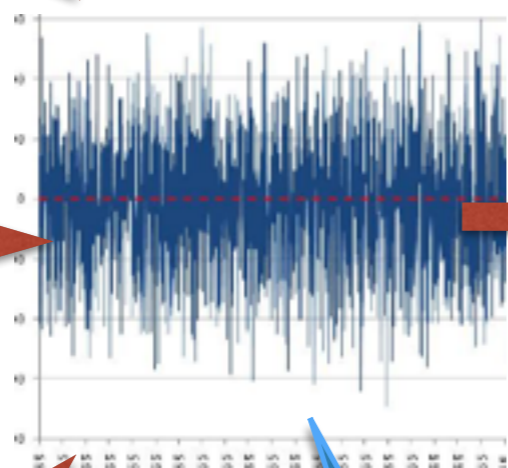
Just van den Broecke - Geonovum
Robert Kieboom - CityGIS
Matthijs Kastelijns - Geonovum/TU Delft

Nijmegen - 26 mei 2016



Data

Datastream



“Raffineren”

Ruwe Data

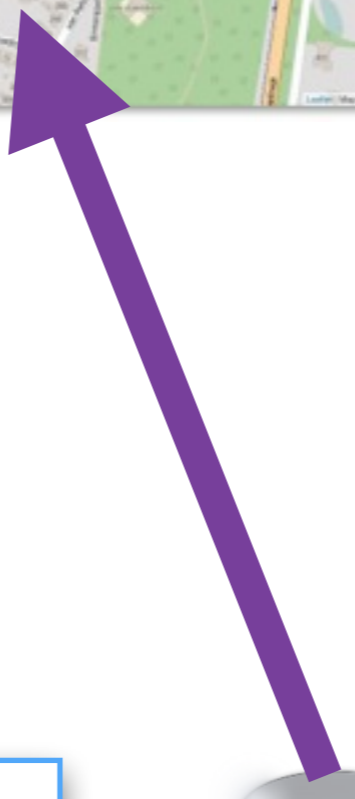
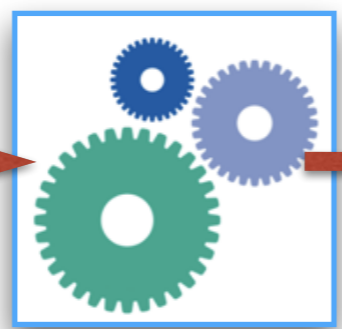
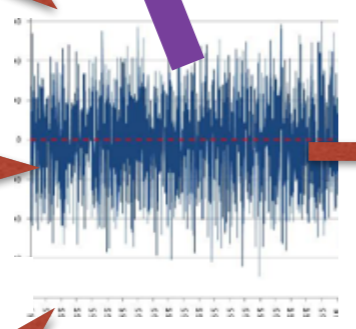
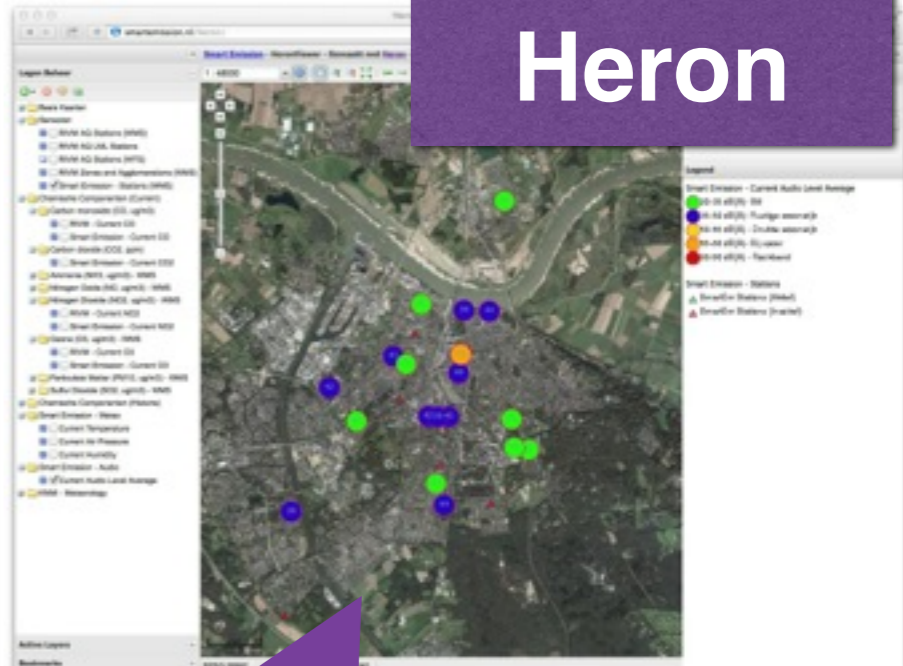
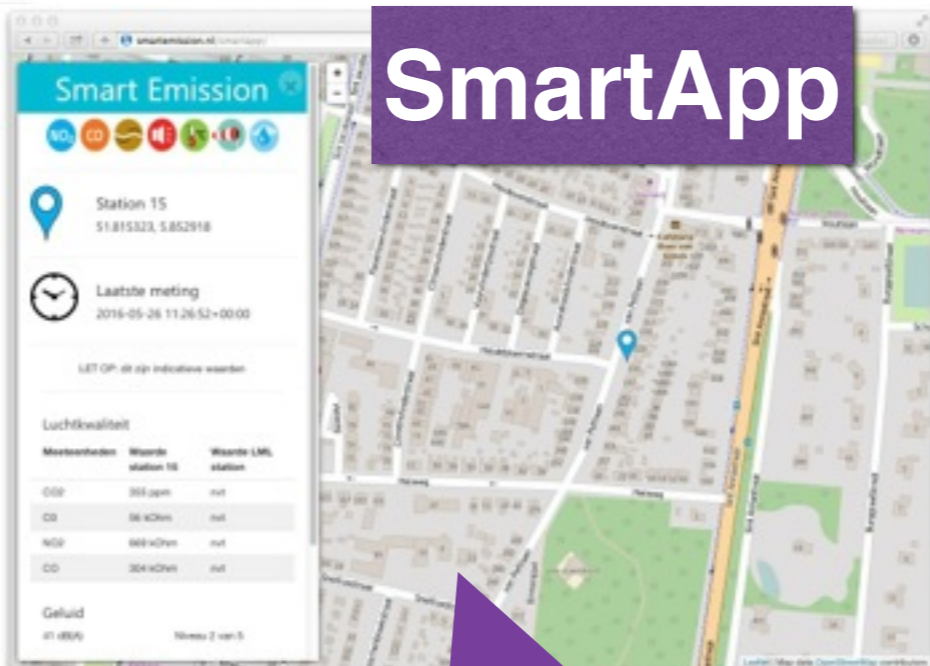
“Verfijnde”
Data

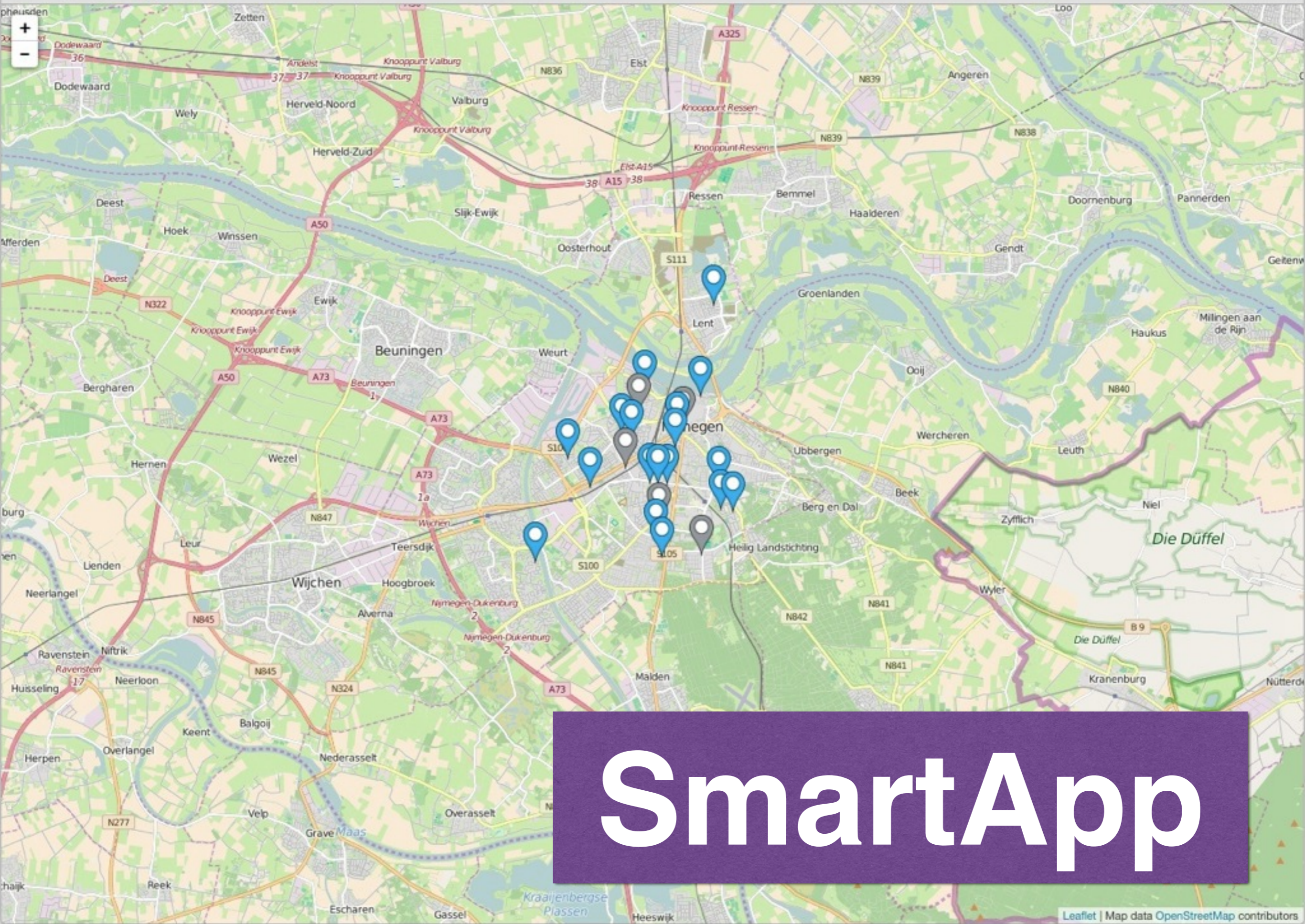
Viewers

Whale

SmartApp

Heron





SmartApp

Smart Emission



Station 15

51.815275, 5.85279



Laatste meting

2016-05-26 14:50:23+00:00

LET OP: dit zijn indicatieve waarden

Luchtkwaliteit

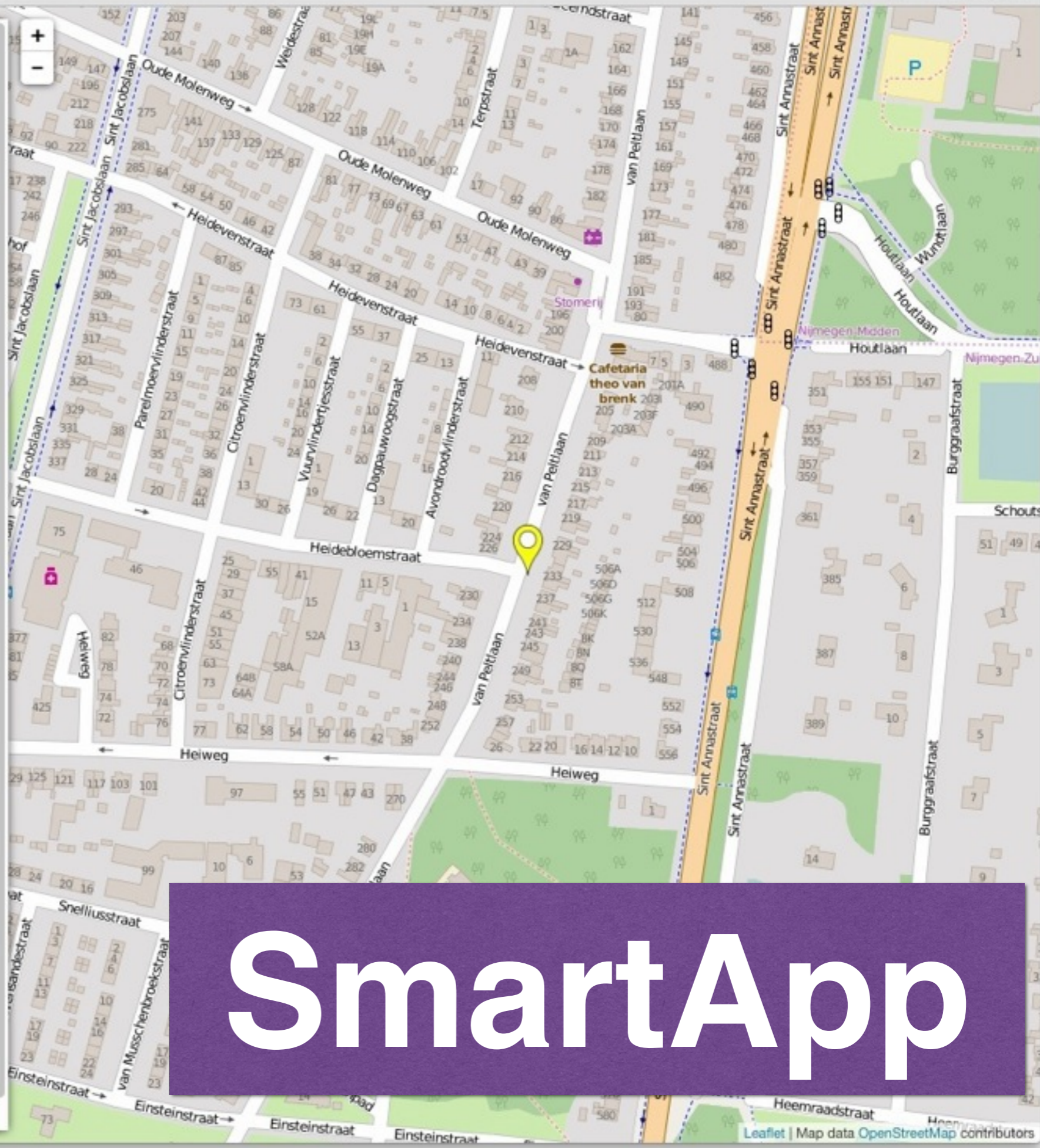
Meeteenheden	Waarde station 15	Waarde LML station
CO2	363 ppm	nvt
O3	103 kOhm	nvt
NO2	669 kOhm	nvt
CO	391 kOhm	nvt

Geluid

41 dB(A) Niveau 2 van 5

Meteo

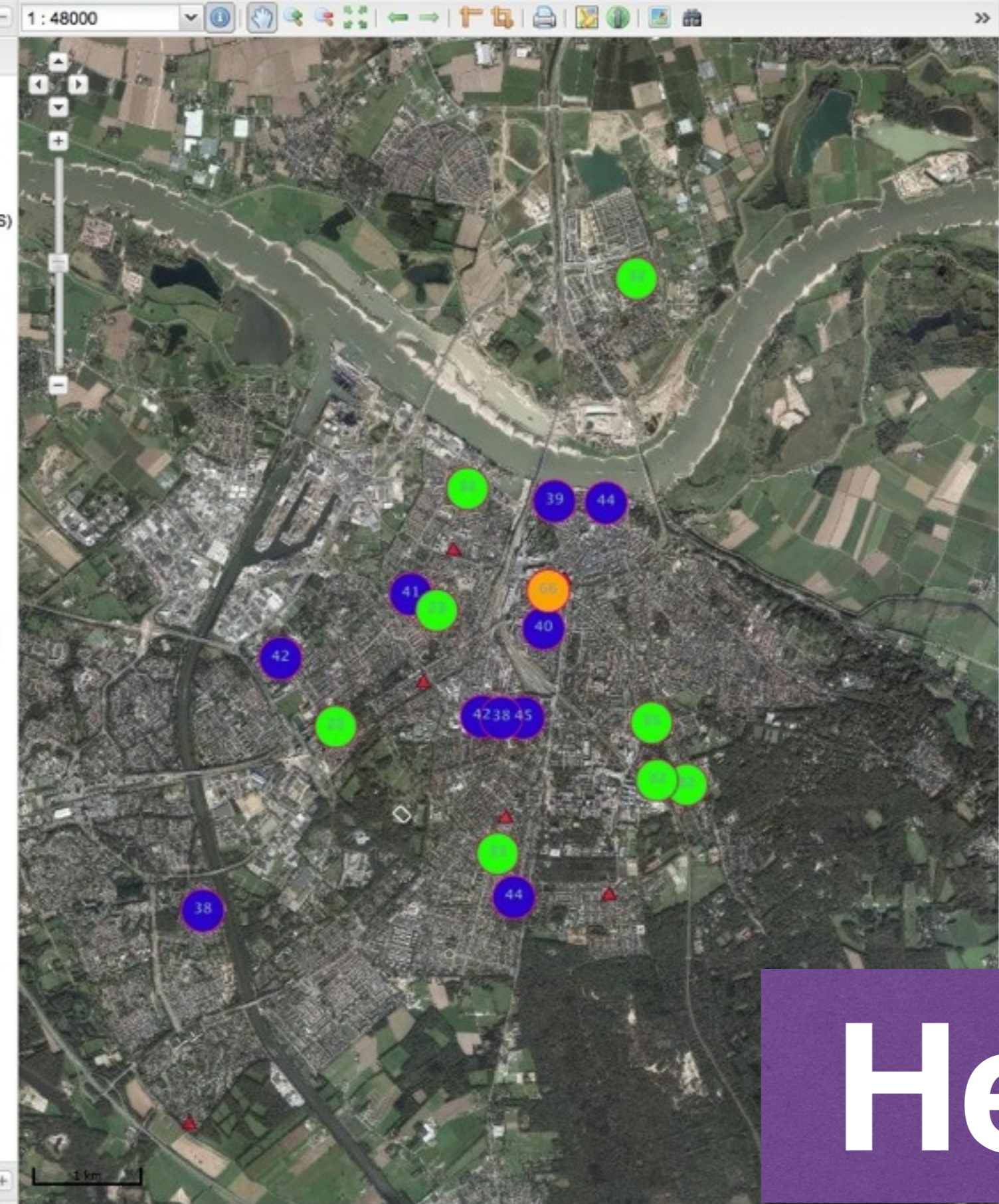
Meeteenheden	Waarde station 15
Temperatuur	21 Celsius
Luchtdruk	1014 HectoPascal
Luchtvochtigheid	49 Procent



SmartApp

Lagen Beheer

- Basis Kaarten
- Sensoren
 - RIVM AQ Stations (WMS)
 - RIVM AQ LML Stations
 - RIVM AQ Stations (WFS)
 - RIVM Zones and Agglomerations (WMS)
 - Smart Emission - Stations (WMS)
- Chemische Componenten (Current)
 - Carbon monoxide (CO, ug/m3)
 - RIVM - Current CO
 - Smart Emission - Current CO
 - Carbon dioxide (CO2, ppm)
 - Smart Emission - Current CO2
 - Ammonia (NH3, ug/m3) - WMS
 - Nitrogen Oxide (NO, ug/m3) - WMS
 - Nitrogen Dioxide (NO2, ug/m3) - WMS
 - RIVM - Current NO2
 - Smart Emission - Current NO2
 - Ozone (O3, ug/m3) - WMS
 - RIVM - Current O3
 - Smart Emission - Current O3
 - Particulate Matter (PM10, ug/m3) - WMS
 - Sulfur Dioxide (SO2, ug/m3) - WMS
- Chemische Componenten (Historie)
- Smart Emission - Meteo
 - Current Temperature
 - Current Air Pressure
 - Current Humidity
- Smart Emission - Audio
 - Current Audio Level Average
- KNMI - Meteorology



Slider for Time Series Layers

Date: 2016-05-26 Time: 11:00:00

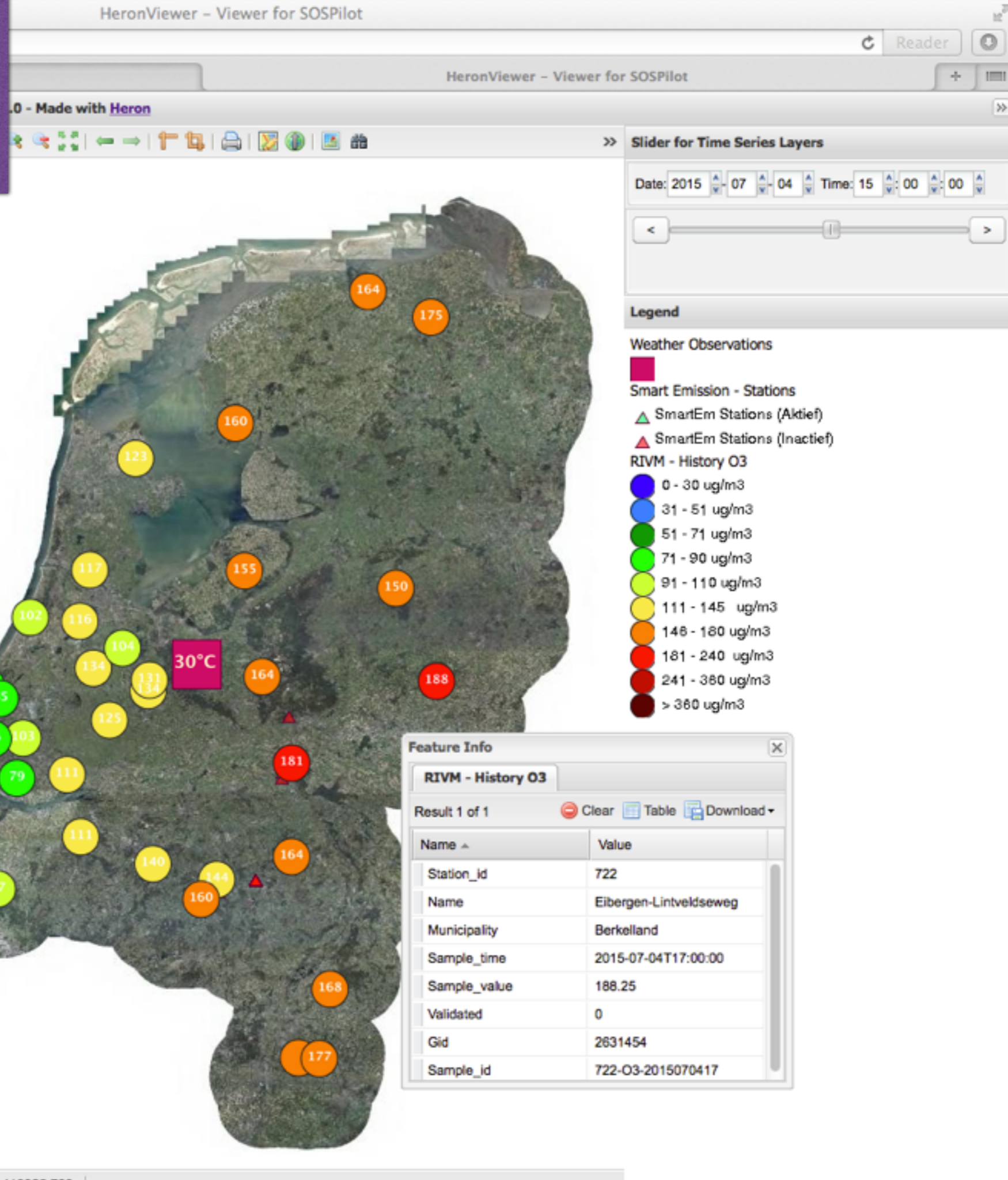
Slider controls for time series layers.

Legend

- Smart Emission - Current Audio Level Average
- 20-35 dB(A) - Stil
 - 35-50 dB(A) - Rustige woonwijk
 - 50-65 dB(A) - Drukke woonwijk
 - 65-80 dB(A) - Bij spoor
 - 80-90 dB(A) - Rockband
- Smart Emission - Stations
- SmartEm Stations (Aktief)
 - SmartEm Stations (Inactief)

Heron

Heron

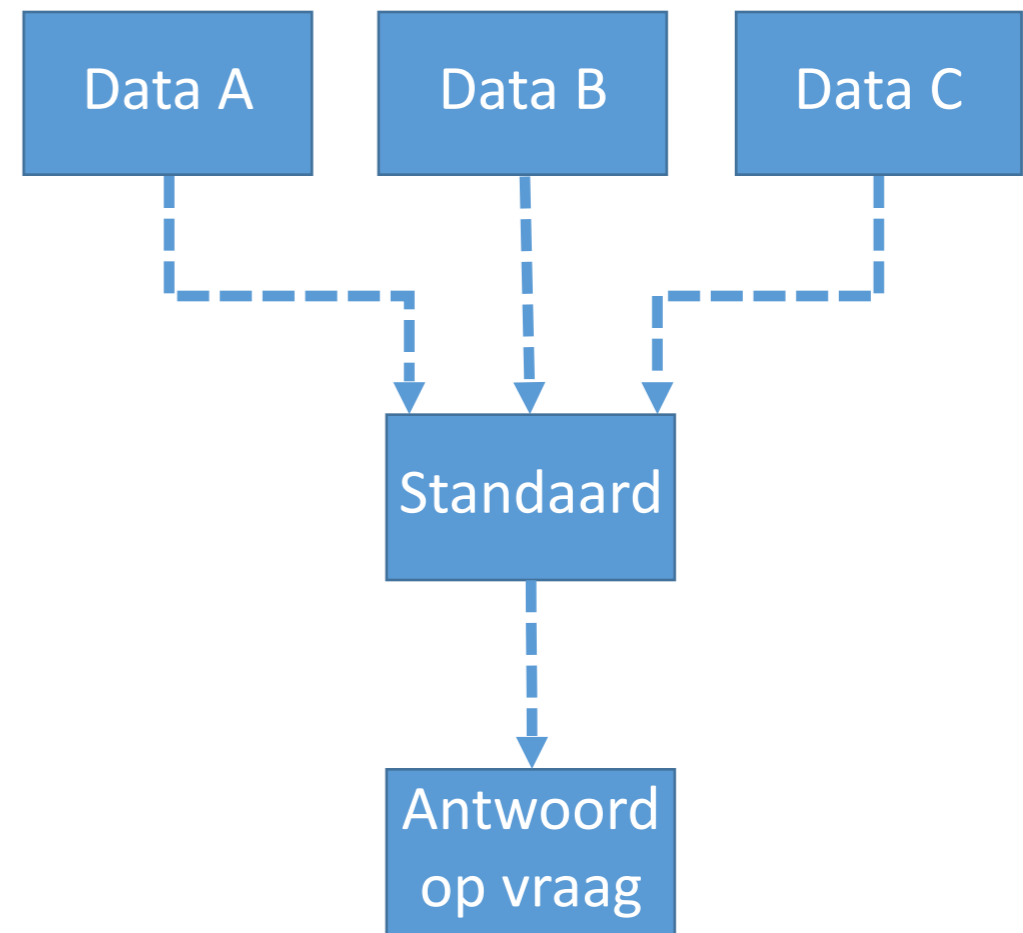
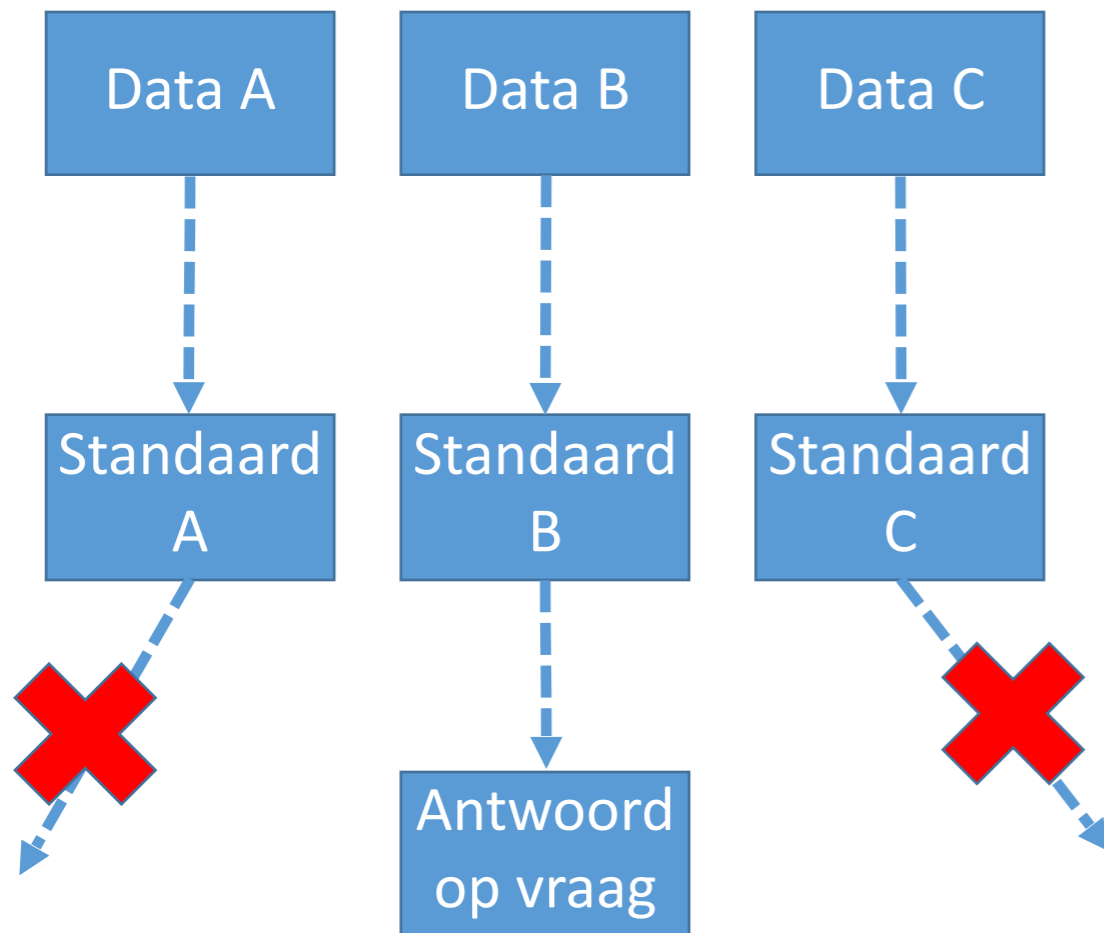


Standdaarden

Waarom zijn standaarden belangrijk?

						
North America Grounded NEMA 5-15	Japan Non-grounded JIS C 8303	Europe German style CEE7/4 Schuko	Europe French style Schuko	Europe/Russia Non-grounded CEE7/16 Europlug	Great Britain Grounded BS-1363	Great Britain "Shaver socket" BS-4573
						
Australia/China Grounded AS-3112	Italy Grounded CEI 23-16	Switzerland Grounded SEV-1011	Denmark Grounded SRAF 1962/DB	Israel Grounded SI 32 (IS 16A-R)	India Grounded BS-546 "Small"	South Africa Grounded BS-546 "Large"

Het nut van data-standaarden

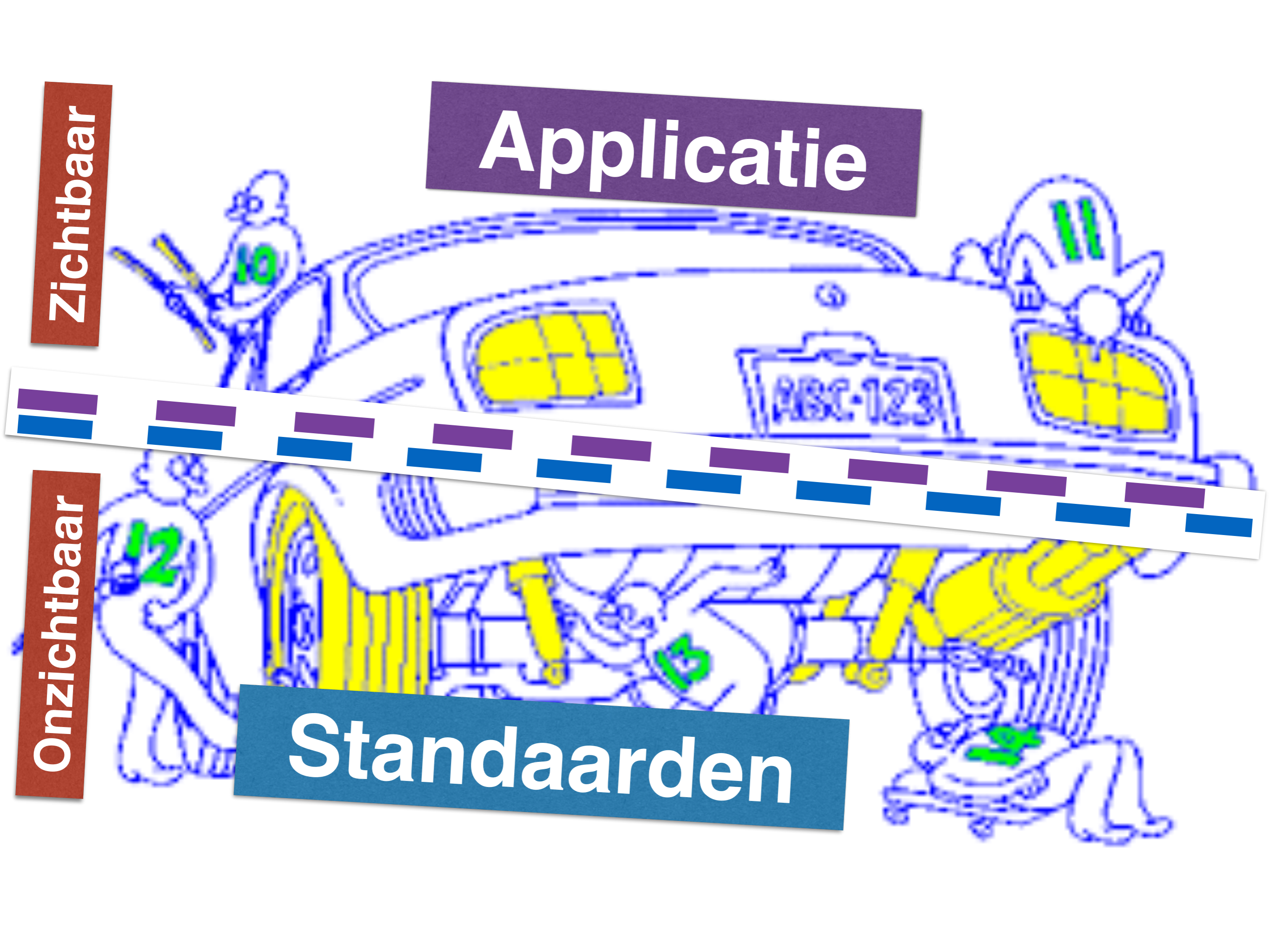


Zichtbaar

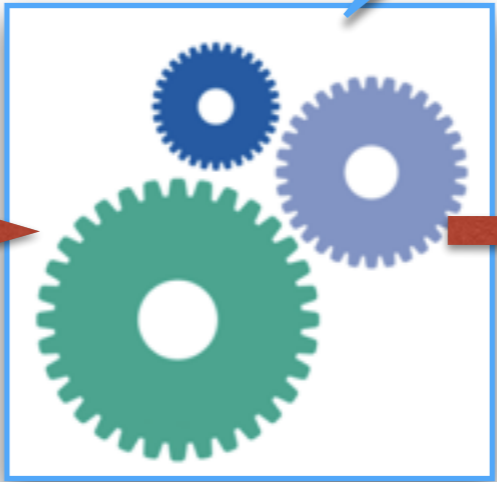
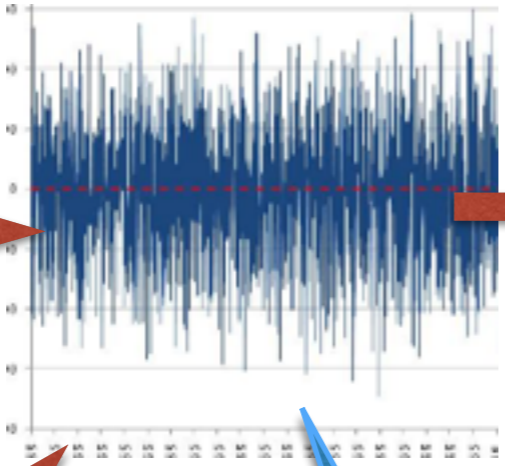
Applicatie

Onzichtbaar

Standaarden



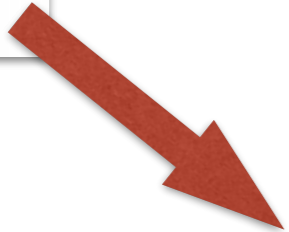
Datastream



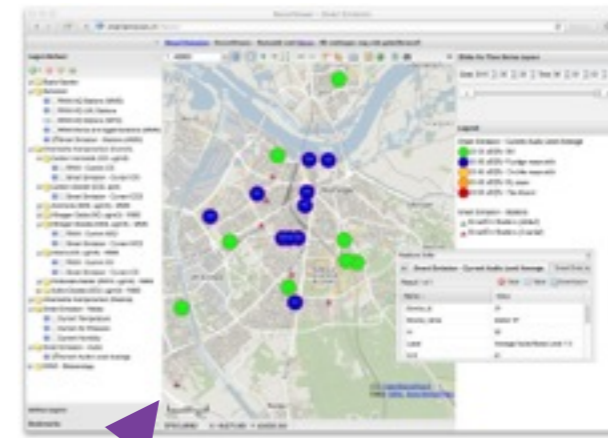
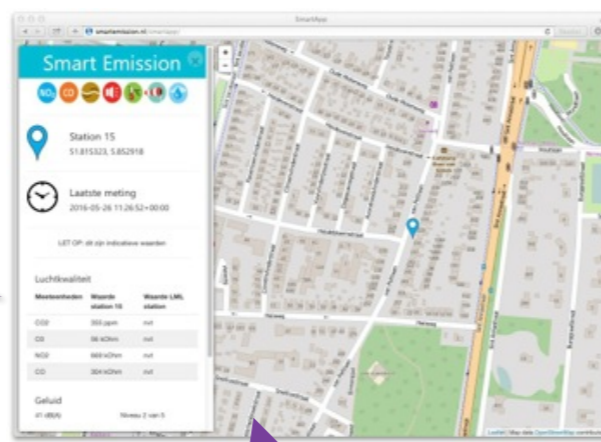
“Raffineren”

Ruwe Data

“Verfijnde”
Data



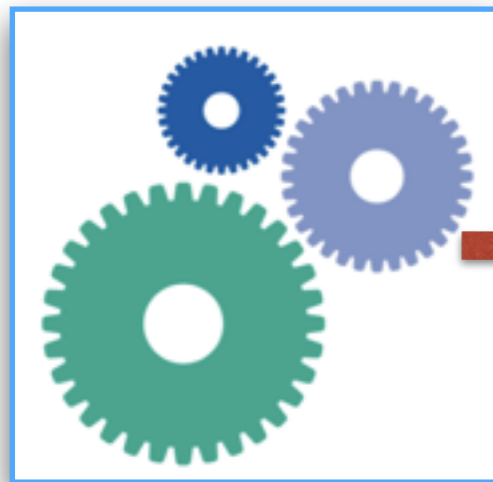
Viewers



Standaarden
"APIs"

SOS

WMS



S
O
S



"Verfijnde"
Data

Dank!